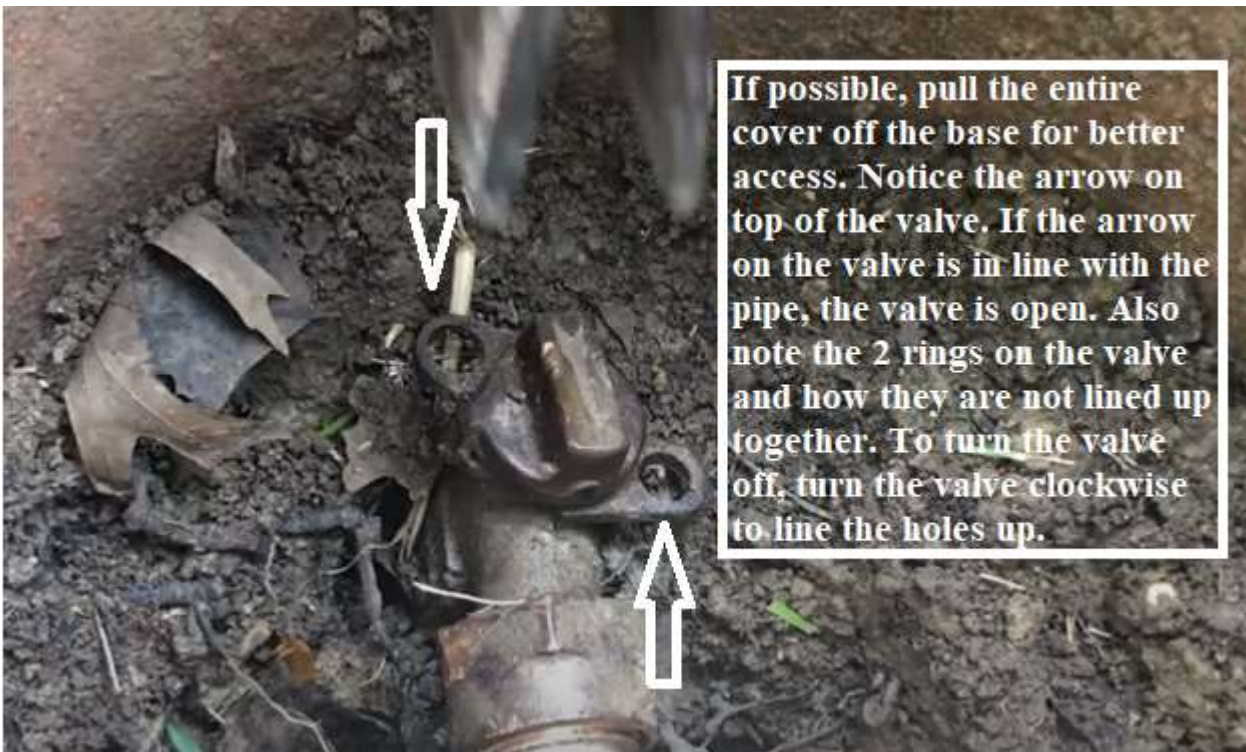
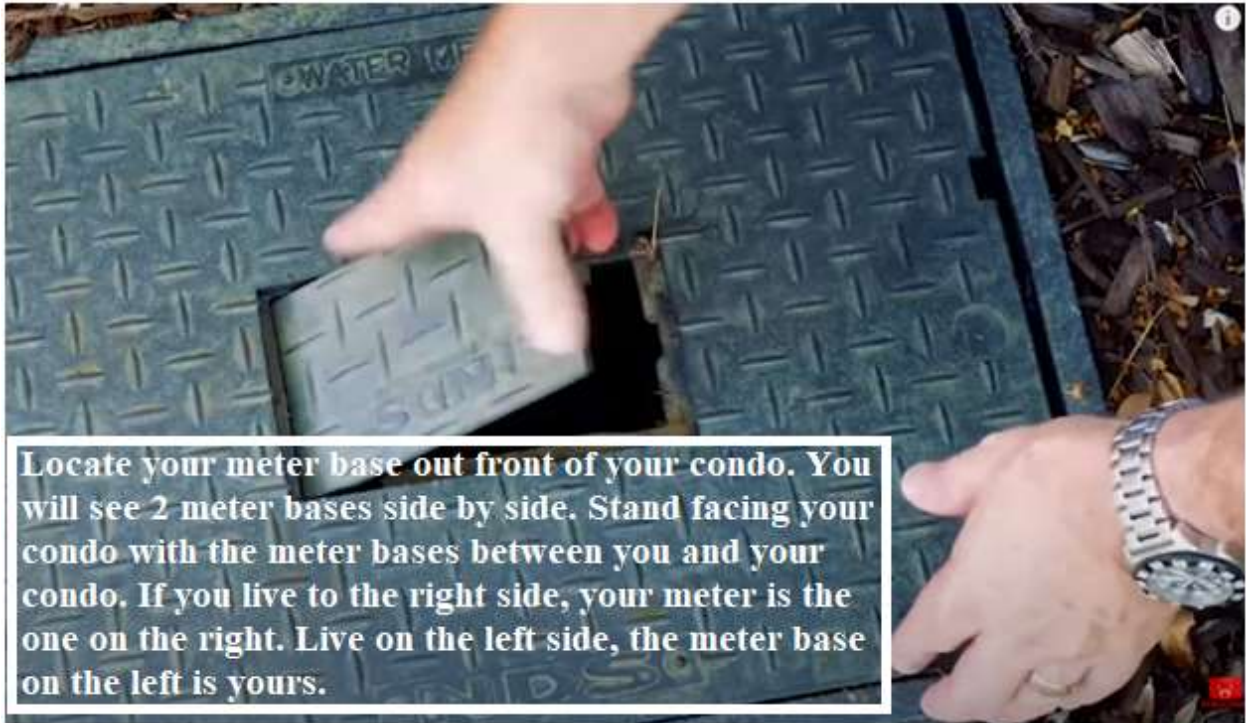
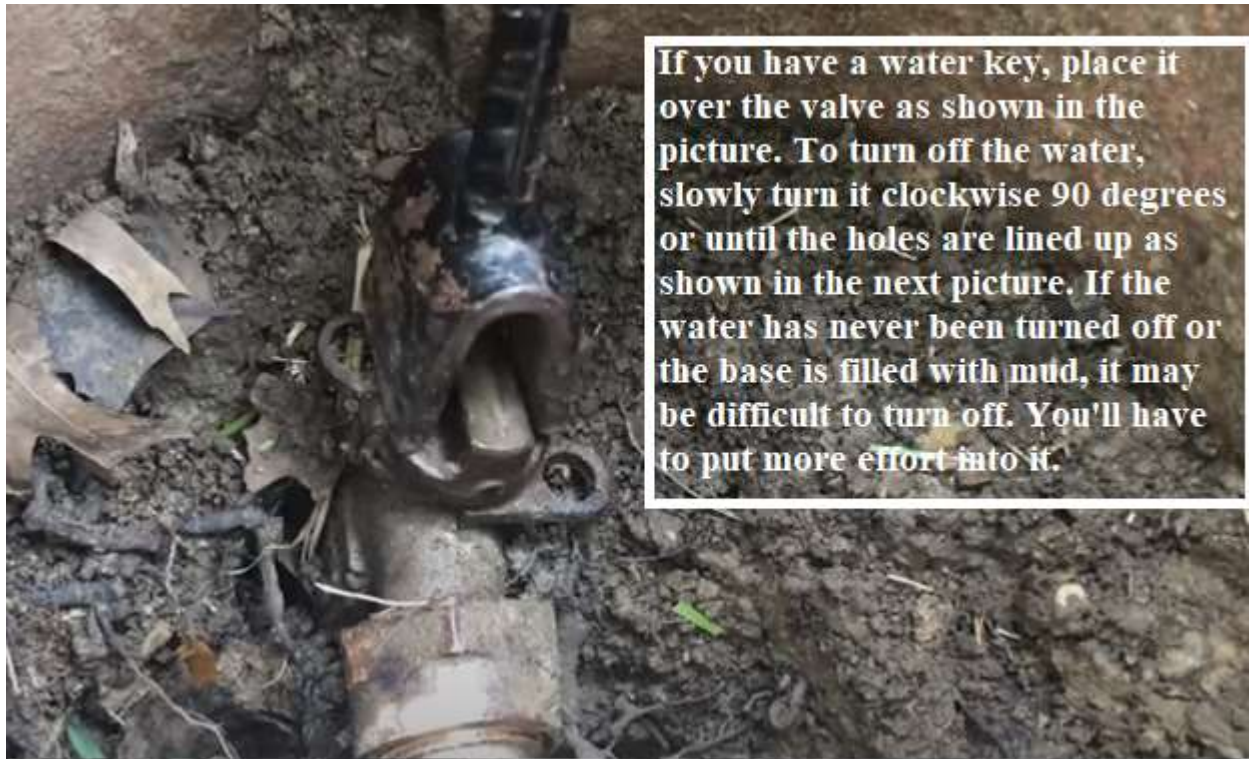
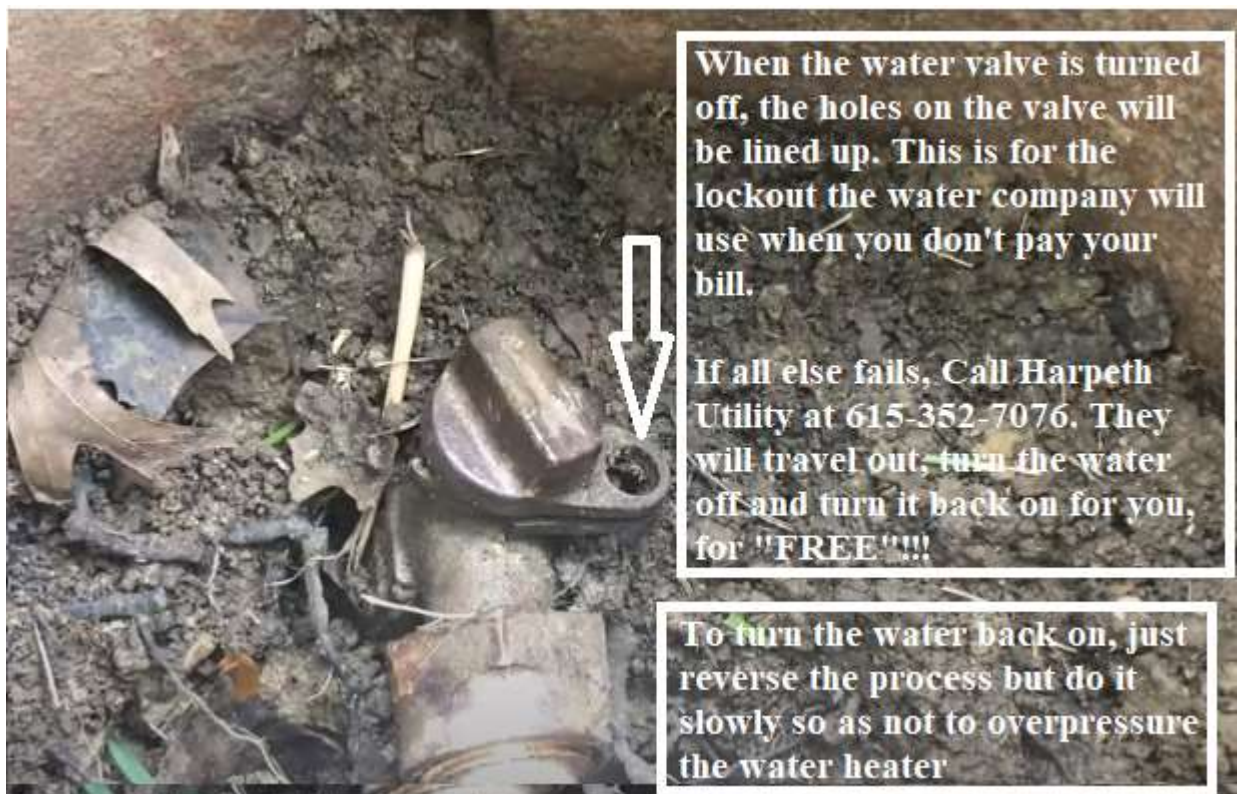


## How to turn off you main water valve to your home





If you have a water key, place it over the valve as shown in the picture. To turn off the water, slowly turn it clockwise 90 degrees or until the holes are lined up as shown in the next picture. If the water has never been turned off or the base is filled with mud, it may be difficult to turn off. You'll have to put more effort into it.



When the water valve is turned off, the holes on the valve will be lined up. This is for the lockout the water company will use when you don't pay your bill.

If all else fails, Call Harpeth Utility at 615-352-7076. They will travel out, turn the water off and turn it back on for you, for "FREE"!!!!

To turn the water back on, just reverse the process but do it slowly so as not to overpressure the water heater